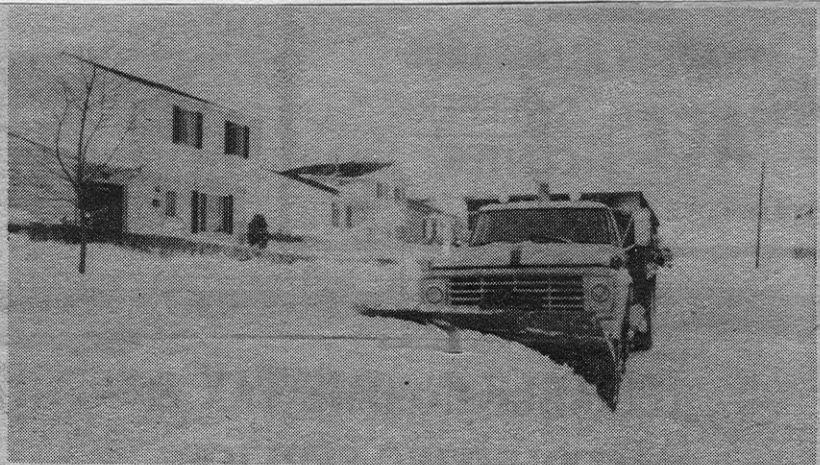
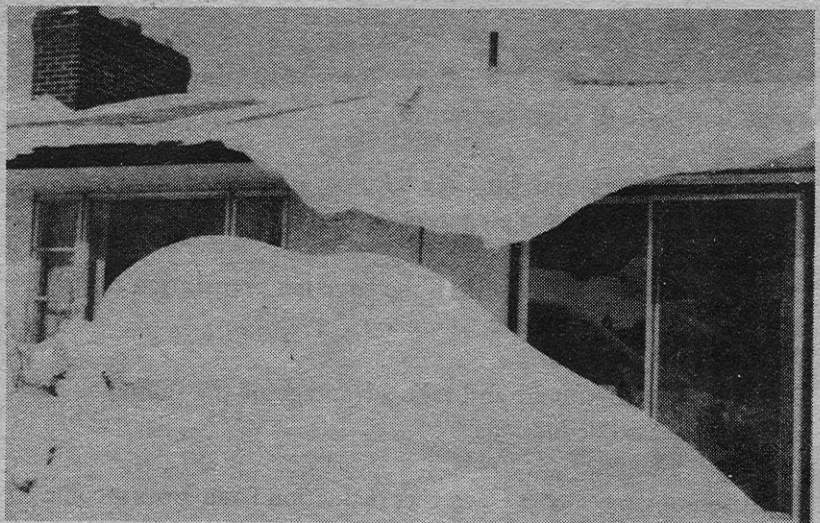


And Snowed...



In the picture above, one of the city's snow plows is shown making a path down Paxton Drive in the Beacon Addition. Unfortunately, cars parked on the side streets were nearly buried by the relocated snow.



The wind blowing across the fields near the Richlanne Acres subdivision sculpted some unexpected panoramas. The photo above shows the rear of the Norman McElheny residence, 5451 Richlanne. The snow on the roof swirled down, almost touching a large drift gathered over shrubbery.



A Good Sign Of Spring!

1-25-1978



Jim Farmer, driver for Commercial Freight Lines brought a shipment of Scott's products to Reynolds Hardware on Wednesday. Some passerbys almost cheered at the sight. One gentleman commented he had just purchased a snow blower now it was time to consider a tiller.

AROUND CITY HALL

By Charlotte Melfe

As of last Friday afternoon, the City had used 75 tons of salt beginning on Monday, in an effort to keep streets and main roads cleared of snow and ice. A new shipment of salt arrived on Thursday, enabling the Service Department to be prepared for future snowfalls.

Luckily, the city's snow equipment is running good - the plows have been utilized a great deal recently, sometimes running on a 24-hour basis.

Did you know there is an ordinance which requires residents to have sidewalks in front of homes and businesses cleared of snow by 10:00 a.m.? Also, residents with no sidewalks are required to clear a 4-foot path in front of their homes. Among other things, this provides for the safety of children walking to and from school.

In light of last week's heavy snowfall and impassable streets in some instances, Mayor Reynolds urges people not to attempt to drive until the streets can be cleared. So many cars stalled, or got hung up in the snow last week, it became difficult to keep traffic running. Emergency squads of fire trucks would have been hard pressed to get through in some areas.

If your trash wasn't picked up Friday, don't fret. The road conditions made the operation next to impossible. The decision not to pick up Friday's collection was mutually agreed upon by the Mayor and King Trucking.